

CCS Technical Documentation NAM-2 Series Transceivers

Disassembly Instructions

[This page intentionally left blank]

Table of contents

	Page No
Disassembly of NAM-2 phone	4
1. Remove the battery.....	6
2. Remove the antenna.	7
3. Remove the UI module.	9
4. Remove the system PWB from the main frame.....	11
5. Removing battery connector and SIM spring.	12
6. Speaker and display removal.....	13

Disassembly of NAM-2 phone

NAM-2 phone



NAM-2 phone disassembled.



Phone covers:



Phone rear:



1. Remove the battery.

Step 1. Push in the snap in the top of the B cover and remove the B cover.



Step 2. Turn the phone around and loosen the hook at the bottom to disassemble A Cover.

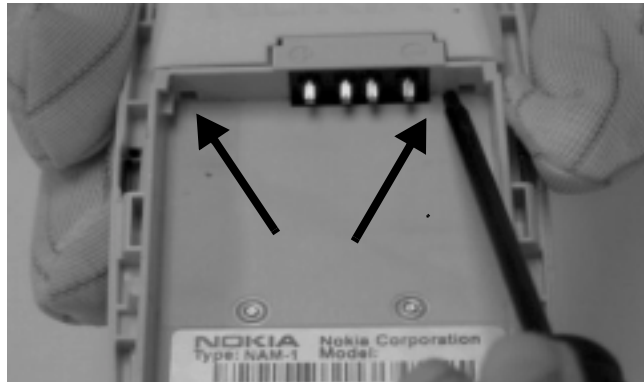


Step 3. Turn the phone around and remove the battery. Use the recess next to the SIM card holder.

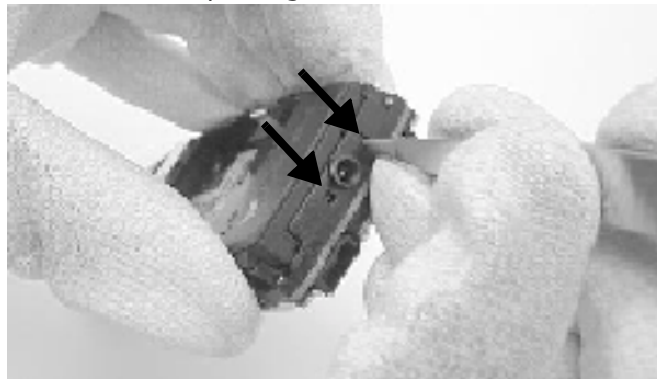
Note: SIM card can be removed after the battery removal.

2. Remove the antenna.

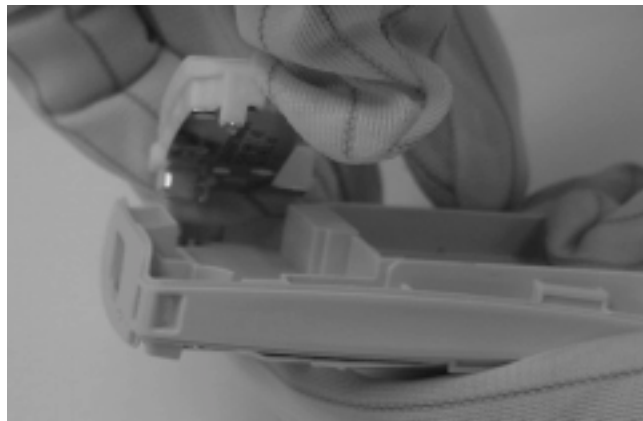
Step 1. Release the snap fixings by pushing slightly from both battery housing corners



Step 2 below: Release the snap fixings also from the other end of the antenna.



Step 3 below. Remove the antenna from the main frame.



Step 4. Visually verify all electrical contact points and that the antenna has not been damaged.



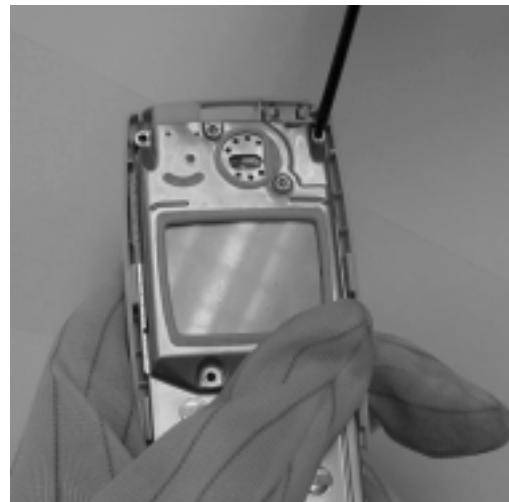
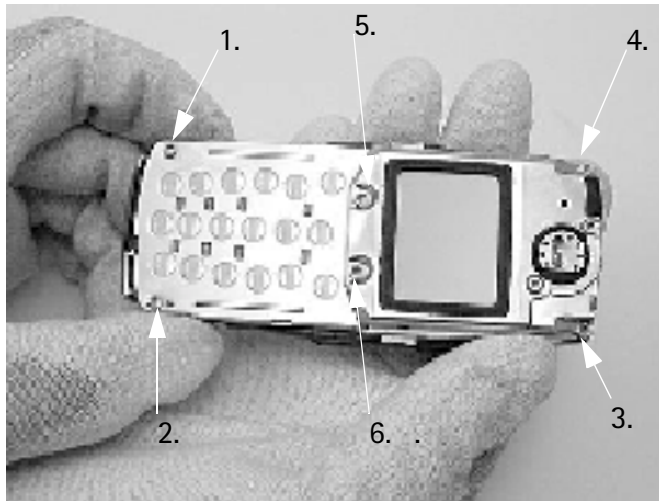
3. Remove the UI module.

Remove the frame screws (6 pcs) starting from number 1 (bottom left).

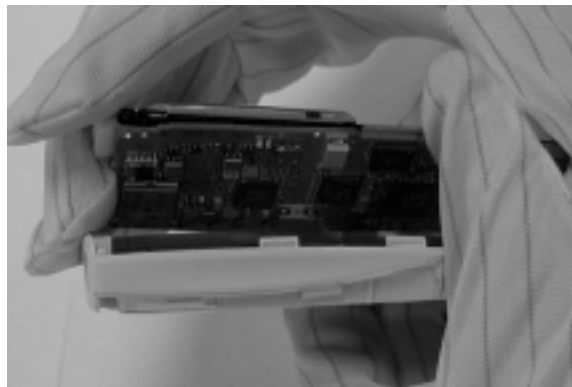
Note: In assembly use reversed order.

Note: When assembling the screws, use 17 Ncm torque.

Drive size is Torx plus 6. Tightening torque is 17 Ncm. In assembly check that PWB is not bent.



UI module can now be separated from the main frame/system module.

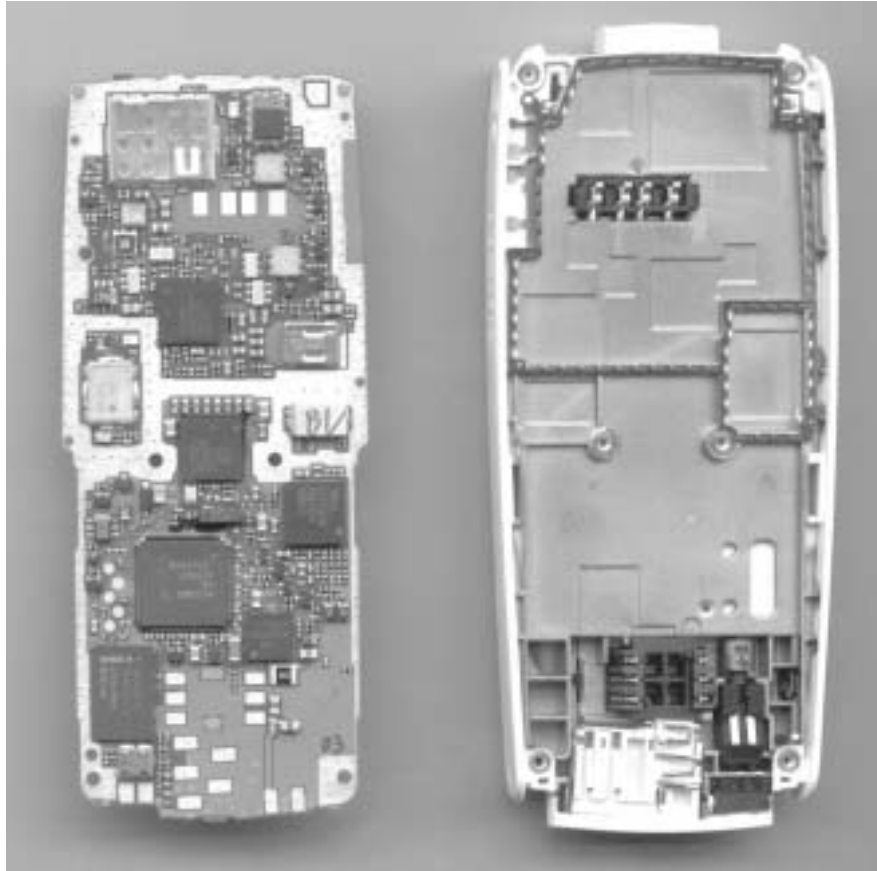


UI module and system PWB apart.



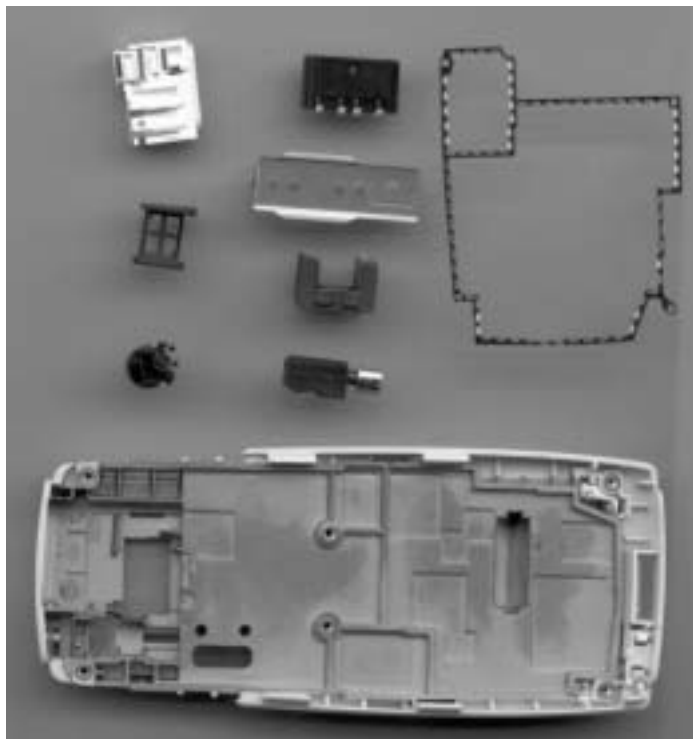
4. Remove the system PWB from the main frame.

Be careful not to damage the metal gasket.



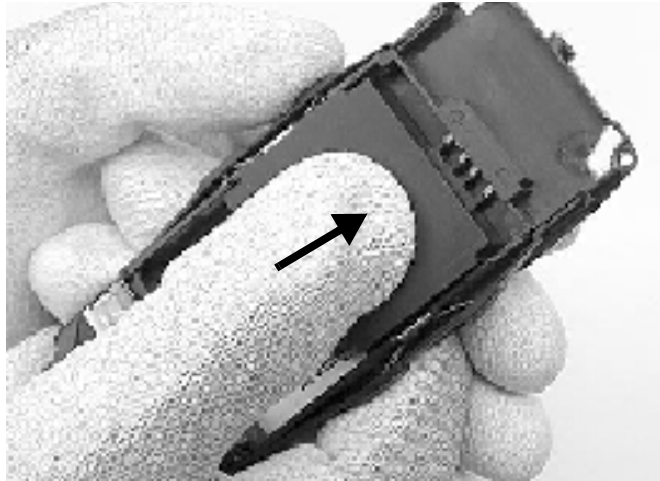
C-cover assembly.

C-cover assembly disassembled.



5. Removing battery connector and SIM spring.

Slide the SRT-3 (Battery Connector Extractor Tool) towards the battery connector and it will be released from the main frame.



To remove the SIM spring from the main frame, turn the phone around.

Use appropriate tool to unlock one end of the SIM spring.



Release the other end of the SIM spring and the spring will come off.



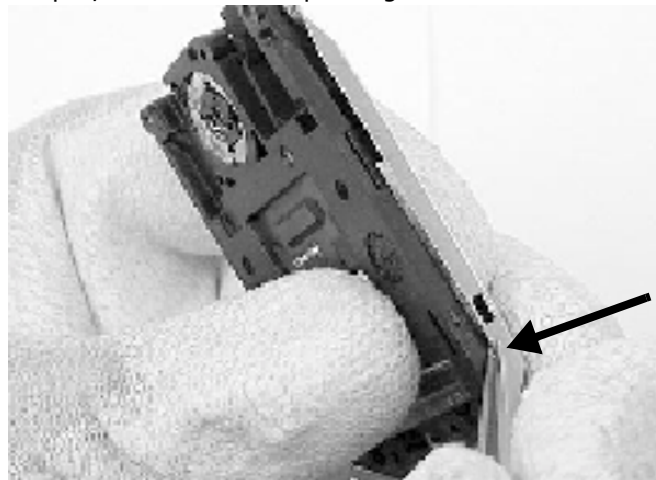
6. Speaker and display removal.

Remove UI module screws (2pcs).

NOTE: When assembling the screws, use 8 Ncm torque.)



To remove the display, release the snap fixings on both sides of the module.



The speaker can now be removed.

NOTE: Do not damage the speaker contact springs.



This page intentionally left blank.